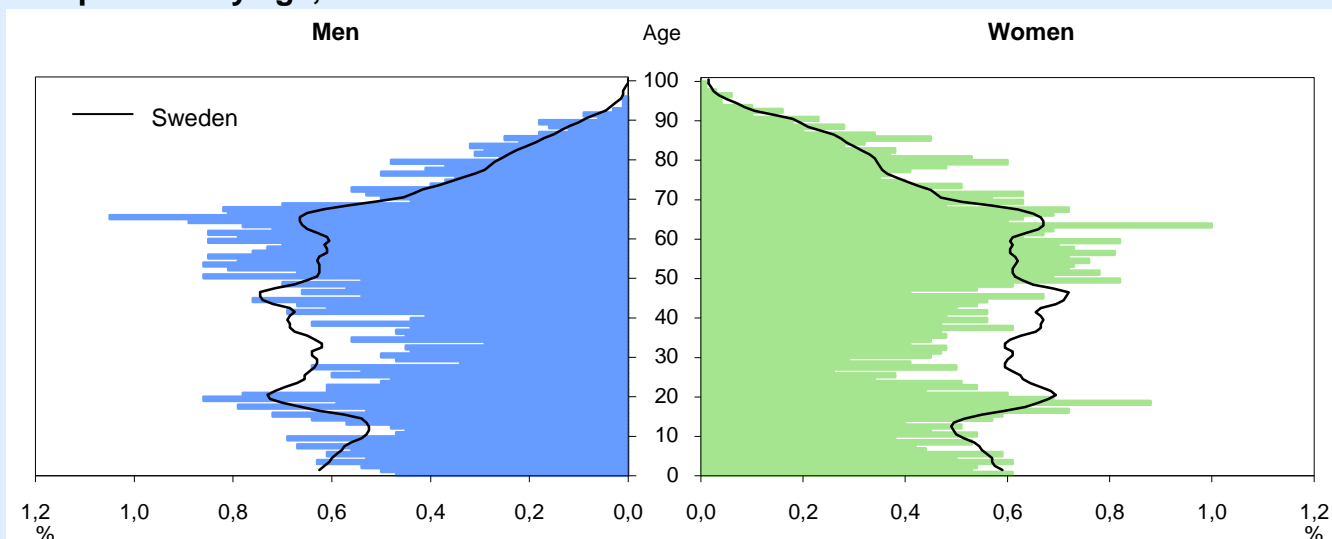


Robertsfors Municipal facts

Land area: 1 302 sq km

Inhabitants/sq km: 5

Population by age, 2010



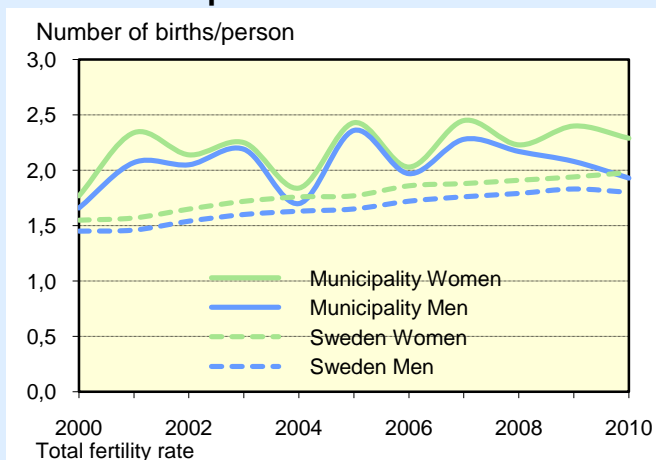
Population by age, 2010

Age	Percentage distribution Municipality			Sweden		
	M	W	Tot	M	W	Tot
0–6	8	8	8	8	8	8
7–15	10	9	10	10	9	10
16–19	5	6	6	6	5	5
20–24	6	5	5	7	7	7
25–44	20	19	20	27	25	26
45–64	29	29	29	26	25	26
65–79	16	16	16	13	14	13
80–	5	8	7	4	7	5
Total, %	100	100	100	100	100	100
Total (thou)	3	3	7	4 690	4 725	9 416

Population trends, 2000–2010

Year (31 Dec.)	Population Number	Excess of births over deaths	Net migration	
			M	W
2000	7 307	-26	-27	4
2001	7 274	-12	5	-27
2002	7 168	-38	-20	-48
2003	7 082	-19	-49	-20
2004	7 106	-37	39	22
2005	7 066	-17	-8	-15
2006	6 996	-27	-27	-19
2007	6 909	-27	-17	-43
2008	6 900	-12	-6	8
2009	6 880	-22	18	-15
2010	6 831	-24	-26	1

Live births per woman/man



Migrations, 2010

	Men	Women
In-migration	144	169
within the county	89	116
from another county	39	41
from another country	16	12
Of which, ages 18–24	27	36
Out-migration	170	168
within the county	125	125
to another county	38	40
to another country	7	3
Of which, ages 18–24	62	66
Net migration	-26	1

Births and deaths, 2010

Number	Men	Women
Births	30	37
Deaths	44	47

Foreign born, 2010

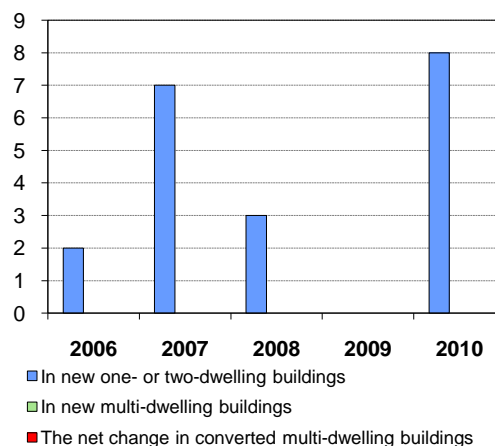
Prop. (%) of all inhabitants	M	W	Tot
Municipality	5	7	6
Sweden	14	15	15

Seats in the Municipal Council

Political party	Number of seats after the election			
	2006		2010	
	Men	Women	Men	Women
Moderate Party	2	0	2	0
Centre Party	6	6	4	5
Liberal Party	2	0	2	0
Christian Democratic Party	1	1	0	1
Green Party	1	0	1	0
Social Democratic Party	6	5	7	7
Left Party	1	0	1	1
Sweden Democrats	0	0	0	0
Other parties	0	0	0	0
Samtliga partier	19	12	17	14

Completed/converted dwellings

Number of dwellings



Population by level of education, 31 December 2010

Level of education	Percentage distribution								
	Municipality			County			Sweden		
	M	W	Tot	M	W	Tot	M	W	Tot
Compulsory schooling	17	12	14	12	8	10	16	12	14
Upper secondary	62	57	60	53	46	50	49	45	47
Post-secondary education	21	31	25	34	45	39	33	41	37
Unknown	1	0	1	1	1	1	2	2	2
Total, %	100	100	100	100	100	100	100	100	100
Total (1 000)	2	2	4	78	73	151	2 789	2 706	5 495

Refers to age group 20–64

Employed by age group, 2009

	Prop. (%) of all within ages		
	Men	Women	Total
Municipality			
20–24	63	58	61
25–44	85	80	82
45–64	81	79	80
20–64	80	78	79
County			
20–24	49	50	50
25–44	80	77	78
45–64	81	77	79
20–64	76	74	75
Sweden			
20–24	53	52	52
25–44	80	77	78
45–64	78	75	76
20–64	76	73	75

Refers to the night population

Night population:

residing in the municipality, regardless of workplace

Day population (jobs):

working in the municipality, regardless of residence

Employment by sector, 2009

	Night population		Day population	
	Men	Women	Men	Women
Municipality	1 688	1 463	1 167	1 129
Business sector	1 437	578	979	437
Public sector	251	885	188	692
County (1 000)	62	57	61	56
Business sector	49	23	48	22
Public sector	13	34	13	34
Sweden (1 000)	2 229	2 062	2 222	2 059
Business sector	1 904	1 135	1 898	1 132
Public sector	324	928	324	927

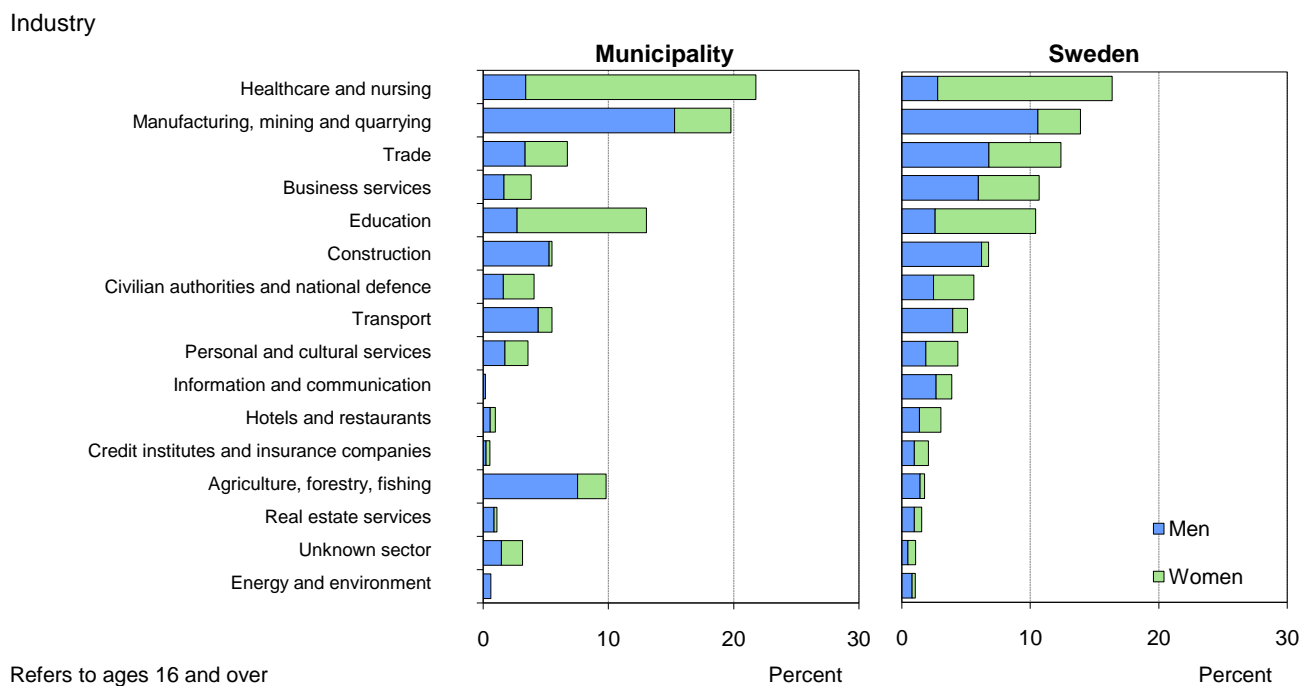
Number of persons ages 16 and over

Commuting, 2009

	Men	Women
Commuting in	183	164
within the county	171	155
from another county	12	9
Commuting out	704	498
within the county	653	471
to another county	51	27
Net commuting	-521	-334

Number of persons ages 16 and over

Employment by industry, 2009



Refers to ages 16 and over

Employed in the municipality, regardless of residence (day population)

Self-employed, 2009

	Men		Women		Self-employed
	Number of employed	Self-empl. in lim.comp.	Number of employed	Self-empl. in lim.comp.	
1	22	162	4	74	74
2-4	45	24	10	8	8
5-9	29	2	5	0	0
10-	16	0	1	0	0
Total	112	188	20	82	82

Number of persons ages 16 and over

Refers to the day population

Sickness/activity compensation, 2010

	Prop. (%) of all within ages		
	Men	Women	Total
Municipality			
55-59	15	19	17
60-64	23	28	25
20-64	9	14	11
Sweden			
55-59	13	20	16
60-64	19	29	24
20-64	6	10	8

Replace benefits for disability pension and sickness

Job seekers

	Proportion (%) of all within age group								
	Municipality			County			Sweden		
	M	W	Tot	M	W	Tot	M	W	Tot
March, 2010									
Ages 20-64	9	6	8	10	7	8	8	7	7
Unemployed	5	3	4	5	3	4	5	4	4
Labour market progr.	4	3	3	4	3	4	3	3	3
Of which, ages 20-24	21	15	18	18	10	14	14	10	12
Number, ages 20-64	183	98	281	7 403	4 790	12 193	224 010	177 196	401 206
March, 2011									
Ages 20-64	8	4	6	8	6	7	7	6	7
Unemployed	5	2	3	4	3	3	4	3	4
Labour market progr.	3	2	3	4	3	4	3	3	3
Of which, ages 20-24	18	7	13	16	9	13	12	9	11
Number, ages 20-64	154	79	233	6 046	4 248	10 294	191 868	169 917	361 785

Employment and employed, 2009 – Total

Industry	Day population				Night population			
	Municipality	County	Sweden	Municipality	County	Sweden		
	Number	%	%	%	Number	%	%	%
Agriculture, forestry, fishing	225	10	3	2	227	7	3	2
Manufacturing, mining and quarrying	454	20	13	14	655	21	13	14
Energy and environment	14	1	1	1	36	1	1	1
Construction	126	5	7	7	189	6	7	7
Trade	154	7	10	12	269	9	10	12
Transport	126	5	5	5	172	5	5	5
Hotels and restaurants	22	1	3	3	33	1	3	3
Information and communication	4	0	3	4	32	1	3	4
Credit institutes and insurance companies	12	1	1	2	31	1	1	2
Real estate services	25	1	1	2	41	1	1	2
Business services	88	4	8	11	148	5	8	11
Civilian authorities and national defence	93	4	5	6	137	4	5	6
Education	299	13	13	10	339	11	13	10
Healthcare and nursing	500	22	22	16	660	21	21	16
Personal and cultural services	82	4	4	4	104	3	4	4
Unknown sector	72	3	1	1	78	2	1	1
Total	2 296	100	100	100	3 151	100	100	100
Refers to ages 16 and over								

Employment and employed, 2009 – Men

Industry	Day population				Night population			
	Municipality	County	Sweden	Municipality	County	Sweden		
	Number	%	%	%	Number	%	%	%
Agriculture, forestry, fishing	173	15	4	3	176	10	4	3
Manufacturing, mining and quarrying	351	30	21	20	521	31	21	20
Energy and environment	14	1	2	2	27	2	2	2
Construction	121	10	12	12	182	11	12	12
Trade	77	7	11	13	176	10	11	13
Transport	101	9	8	8	142	8	8	8
Hotels and restaurants	13	1	2	3	17	1	2	3
Information and communication	4	0	4	5	22	1	4	5
Credit institutes and insurance companies	5	0	1	2	16	1	1	2
Real estate services	20	2	2	2	27	2	2	2
Business services	38	3	9	11	71	4	9	11
Civilian authorities and national defence	37	3	4	5	58	3	4	5
Education	62	5	8	5	76	5	8	5
Healthcare and nursing	78	7	8	5	93	6	8	5
Personal and cultural services	40	3	3	4	49	3	3	4
Unknown sector	33	3	1	1	35	2	1	1
Total	1 167	100	100	100	1 688	100	100	100
Refers to ages 16 and over								

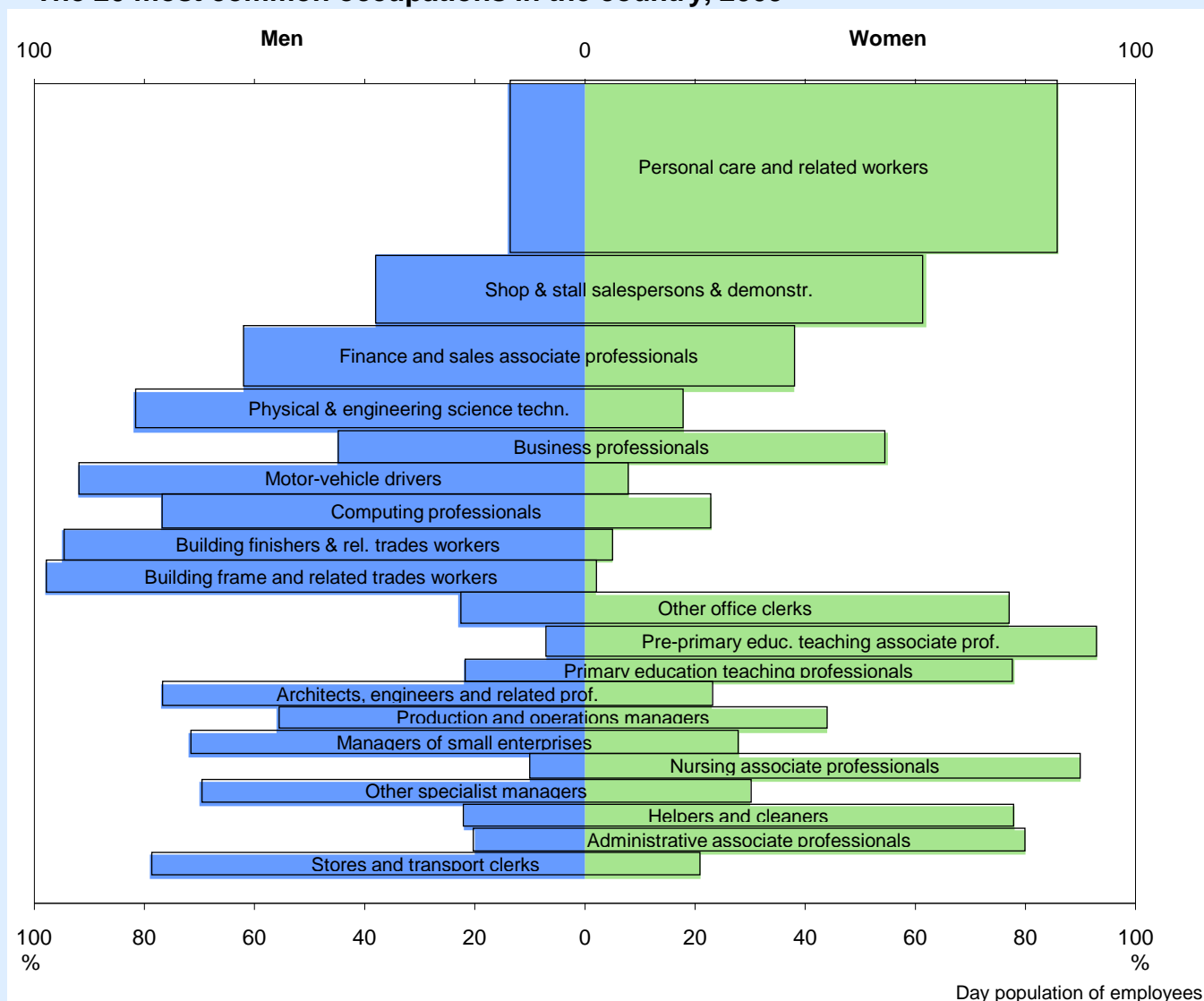
Employment and employed, 2009 – Women

Industry	Day population				Night population			
	Municipality	County	Sweden	Municipality	County	Sweden		
	Number	%	%	%	Number	%	%	%
Agriculture, forestry, fishing	52	5	1	1	51	3	1	1
Manufacturing, mining and quarrying	103	9	5	7	134	9	5	7
Energy and environment	0	0	1	1	9	1	1	1
Construction	5	0	1	1	7	0	1	1
Trade	77	7	9	12	93	6	9	12
Transport	25	2	2	2	30	2	2	2
Hotels and restaurants	9	1	3	3	16	1	3	3
Information and communication	0	0	1	3	10	1	1	3
Credit institutes and insurance companies	7	1	1	2	15	1	1	2
Real estate services	5	0	1	1	14	1	1	1
Business services	50	4	7	10	77	5	7	10
Civilian authorities and national defence	56	5	6	7	79	5	6	7
Education	237	21	19	16	263	18	19	16
Healthcare and nursing	422	37	36	28	567	39	36	28
Personal and cultural services	42	4	5	5	55	4	5	5
Unknown sector	39	3	1	1	43	3	1	1
Total	1 129	100	100	100	1 463	100	100	100
Refers to ages 16 and over								

The 20 most common occupations in the municipality, 2009

Day population of employees	Number		Perc.distr.			Sex distr. (%)	
	Men	Women	M	W	Tot	M	W
Personal care and related workers	61	394	6	39	23	13	87
Building finishers & rel. trades workers	65	26	7	3	5	71	29
Shop & stall salespersons & demonstr.	33	53	3	5	4	38	62
Motor-vehicle drivers	72	7	8	1	4	91	9
Primary education teaching professionals	18	44	2	4	3	29	71
Building frame and related trades workers	54	0	6	0	3	100	0
Metal- & mineral-products machine op.	49	4	5	0	3	92	8
Animal producers and related workers	27	22	3	2	2	55	45
Managers of small enterprises	38	10	4	1	2	79	21
Pre-primary educ. teaching associate prof.	3	45	0	4	2	6	94
Sec. education teaching professionals	19	22	2	2	2	46	54
Helpers and cleaners	4	32	0	3	2	11	89
Production and operations managers	19	16	2	2	2	54	46
Assemblers	19	13	2	1	2	59	41
Client information clerks	4	26	0	3	2	13	87
Machinery mechanics and fitters	27	1	3	0	1	96	4
Physical & engineering science techn.	25	2	3	0	1	93	7
Other specialist managers	21	5	2	0	1	81	19
Housekeeping & rest. serv. workers	3	22	0	2	1	12	88
Metal mould., welders, sheet-metal work., & rel. wor	22	1	2	0	1	96	4
Total 20 occupations	583	745	62	73	68	44	56
All occupations	946	1 021	100	100	100	48	52

The 20 most common occupations in the country, 2009



Preschool activities and care of school-age children 2010

Enrollment	Municipality		Sweden
	Number	%	%
Pre-school, 1–5	273	72	83
Leisure time centre, 6–12	175	35	54
Pedagogical child care, 1–5	36	9	3
6–12	12	2	0
Proportion (%) of all within age group			

Elder care - Refers to ages 80 and over

	Prop. (%) of all within group			
	Municipality		Sweden	
	M	W	M	W
Home-help services 1)	-	-	-	-
Special housing 1)	-	-	-	-
Transport service 2009	35	61	27	41

1) 2009 not published due to poor quality. 2010 will be produced in the autumn.

Total income, 2009

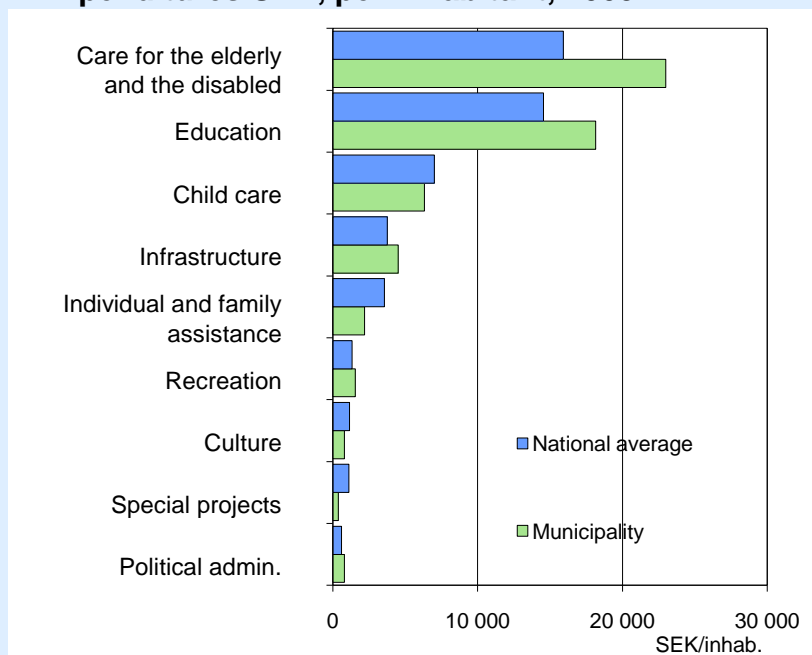
	SEK thousand		
	Men	Women	Total
Average income			
Municipality	265	215	241
County	272	216	245
Sweden	295	225	261
Median income			
Municipality	273	220	245
County	280	224	250
Sweden	284	227	253

Income from employm. and business, age gr. 20–64

Social assistance, 2009

Type of household	Recipient households		Sweden
	Municipality	%	
	Number	%	%
Cohabiting			
without children	0	0	6
with children	0	0	12
Single men			
without children	46	36	40
with children	4	3	3
Single women			
without children	42	33	24
with children	35	28	15
Total	127	100	100

Expenditures SEK, per inhabitant, 2009



Local taxes, 2011

Municipality	
Total local tax rate	32,90
of wich to municipality	22,40
Tax base, SEK/inhab.	152 409
Tax base, index	88
County average	
Total local tax rate	33,13
of wich to municipality	22,63
Tax base, SEK/inhab.	163 722
Tax base, index	94
National average	
Total local tax rate	31,55
of wich to municipality	20,73
Tax base, SEK/inhab.	173 718
Tax base, index	100
Index, Sweden = 100	