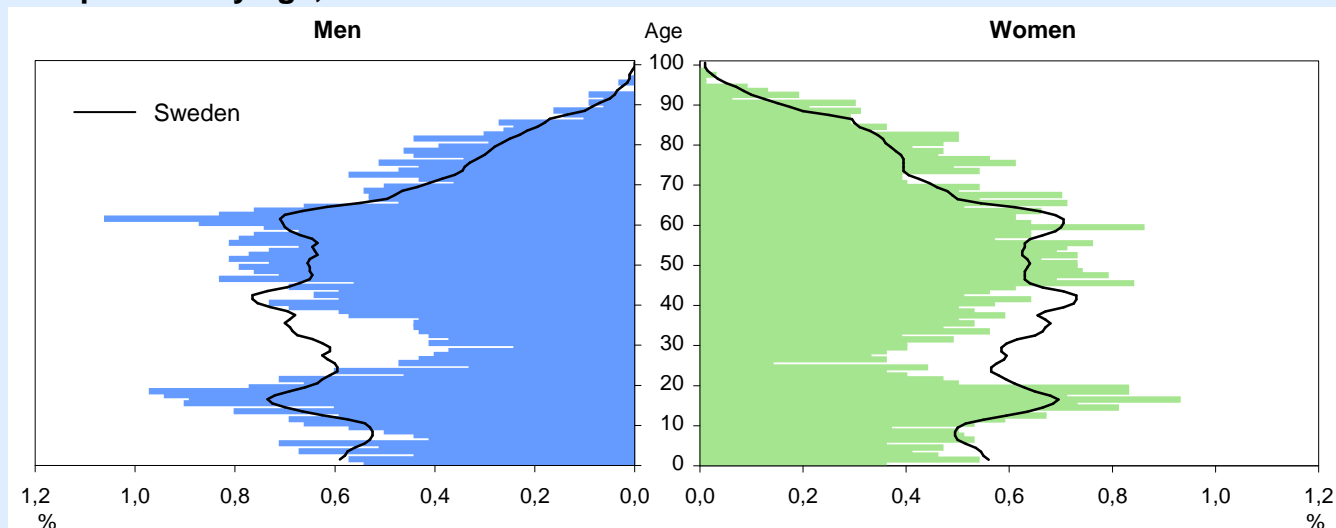


Robertsfors Municipal facts

Land area: 1 301 sq km

Inhabitants/sq km: 5,38

Population by age, 2006



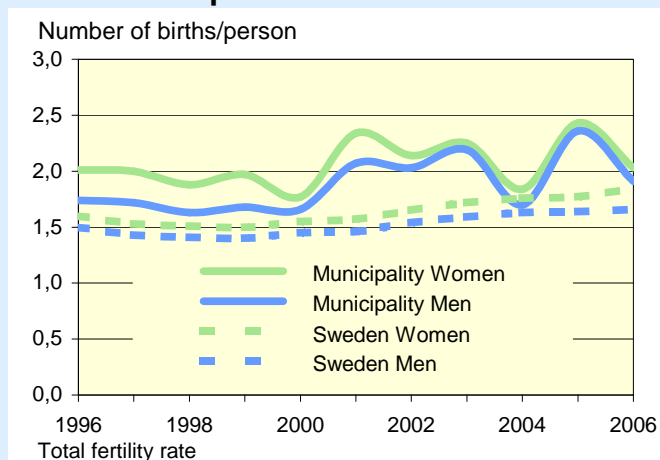
Population by age, 2006

Age	Percentage distribution Municipality			Sweden		
	M	W	Tot	M	W	Tot
0-6	8	6	7	8	7	8
7-15	11	11	11	11	10	11
16-19	7	7	7	6	5	5
20-24	5	4	5	6	6	6
25-44	20	19	19	27	26	27
45-64	30	28	29	27	26	26
65-79	14	16	15	11	13	12
80-	5	9	7	4	7	5
Total, %	100	100	100	100	100	100
Total (thou)	4	3	7	4 524	4 590	9 113
Antal	3 547	3 449				

Population trends, 1996-2006

Year (31 Dec.)	Number Population	Excess of births over deaths	Net migration	
			M	W
1996	7 637	-37	-33	0
1997	7 559	-26	-15	-36
1998	7 439	-34	-48	-33
1999	7 355	-14	-25	-45
2000	7 307	-26	-27	4
2001	7 274	-12	5	-27
2002	7 168	-38	-20	-48
2003	7 082	-19	-49	-20
2004	7 106	-37	39	22
2005	7 066	-17	-8	-15
2006	6 996	-27	-27	-19

Live births per woman/man



Migrations, 2006

	Men	Women
In-migration	156	152
within the county	114	107
from another county	36	36
from another country	6	9
Of which, ages 18-24	28	47
Out-migration	183	171
within the county	122	119
to another county	57	50
to another country	4	2
Of which, ages 18-24	54	55
Net migration	-27	-19

Births and deaths, 2006

Number	Men	Women
Births	37	23
Deaths	49	38

Foreign born, 2006

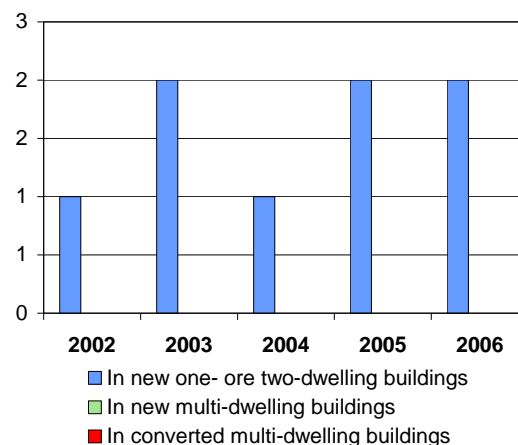
Prop. (%) of all inhabitants	M	W	Tot
Municipality	4	5	4
Sweden	12	13	13

Seats in the Municipal Council

Political party	Number of seats after the election			
	2002		2006	
	Men	Women	Men	Women
Moderate Party	1	0	2	0
Centre Party	7	5	6	6
Liberal Party	1	1	2	0
Christian Democratic Party	2	1	1	1
Green Party	1	0	1	0
Social Democratic Party	7	5	6	5
Left Party	0	0	1	0
Other parties	0	0	0	0
All parties	19	12	19	12

Completed/converted dwellings

Number of dwellings



Population by level of education, 31 December 2006

Level of education	Percentage distribution								
	Municipality			County			Sweden		
	M	W	Tot	M	W	Tot	M	W	Tot
Compulsory schooling	19	12	16	13	9	11	18	14	16
Upper secondary	61	58	60	53	47	50	50	47	48
Post-secondary education	20	29	24	33	43	38	31	38	34
Unknown	1	1	1	1	1	1	2	2	2
Total, %	100	100	100	100	100	100	100	100	100
Total (1 000)	2	2	4	78	74	151	2 722	2 641	5 363

Refers to age group 20–64

Employed by age group, 2005

	Prop. (%) of all within ages		
	Men	Women	Total
Municipality			
20–24	73	68	71
25–44	87	85	86
45–64	83	78	81
20–64	84	80	82
County			
20–24	53	48	51
25–44	81	78	79
45–64	80	77	79
20–64	77	73	75
Sweden			
20–24	57	52	55
25–44	82	77	79
45–64	78	75	76
20–64	77	74	76

Refers to the night population

Night population:

residing in the municipality, regardless of workplace

Day population (jobs):

working in the municipality, regardless of residence

Employment by sector, 2005

	Night population		Day population	
	Men	Women	Men	Women
Municipality	1 732	1 529	1 257	1 272
Business sector	1 470	584	1 065	476
Public sector	262	945	192	796
County (1 000)	62	56	61	55
Business sector	49	22	48	21
Public sector	14	34	13	34
Sweden (1 000)	2 181	2 004	2 174	2 001
Business sector	1 841	1 049	1 835	1 047
Public sector	340	955	339	954

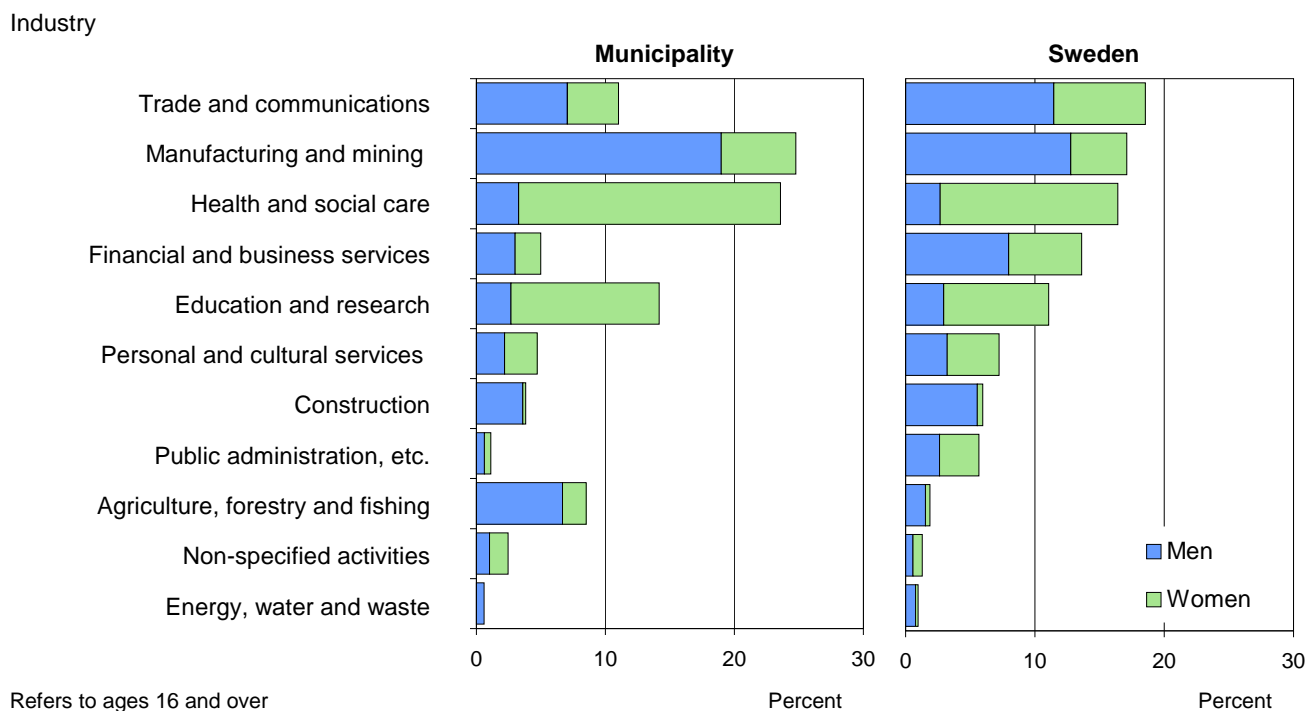
Number of persons ages 16 and over

Commuting, 2005

	Men	Women
Commuting in	192	173
within the county	176	160
from another county	16	13
Commuting out	667	430
within the county	627	408
to another county	40	22
Net commuting	-475	-257

Number of persons ages 16 and over

Employment by industry, 2005



Self-employed, 2005

	Men		Women	
	Self-empl. in lim.comp.	Self-employed	Self-empl. in lim.comp.	Self-employed
1	15	159	3	65
2-4	46	22	10	12
5-9	28	3	8	0
10-	23	1	0	0
Total	112	185	21	77

Number of persons ages 16 and over

Refers to the day population

Early retirement, 2006

	Prop. (%) of all within ages		Total
	Men	Women	
Municipality			
55-59	20	24	22
60-64	21	36	27
20-64	10	16	13
Sweden			
55-59	16	24	20
60-64	24	34	29
20-64	8	13	10

Includes those with temporary disability pension

Job seekers

	Proportion (%) of all within age group								
	Municipality			County			Sweden		
	M	W	Tot	M	W	Tot	M	W	Tot
March, 2006									
Ages 20-64	7	4	6	9	6	7	7	6	7
Unemployed	5	3	4	5	3	4	4	3	4
Labour market progr.	2	2	2	4	3	3	3	2	3
Of which, ages 20-24	14	10	13	15	9	12	12	8	10
Number, ages 20-64	138	81	219	6 831	4 442	11 273	193 846	154 736	348 582
March, 2007									
Ages 20-64	5	4	5	6	4	5	5	4	5
Unemployed	4	3	4	4	3	4	4	3	3
Labour market progr.	1	1	1	2	1	1	1	1	1
Of which, ages 20-24	11	9	10	11	6	8	8	6	7
Number, ages 20-64	105	73	178	4 522	3 081	7 603	130 216	111 742	241 958

Employment and employed, 2005 – Total

Industry	Day population				Night population			
	Municipality	County	Sweden	Municipality	County	Sweden		
	Number	%	%	%	Number	%	%	%
Agriculture, forestry and fishing	216	9	3	2	218	7	3	2
Manufacturing and mining	627	25	17	17	821	25	16	17
Energy, water and waste	15	1	1	1	33	1	1	1
Construction	97	4	6	6	150	5	6	6
Trade and communications	279	11	16	19	410	13	16	19
Financial and business services	127	5	9	14	190	6	10	14
Education and research	359	14	14	11	389	12	14	11
Health and social care	597	24	21	16	746	23	21	16
Personal and cultural services	120	5	7	7	156	5	7	7
Public administration, etc.	29	1	5	6	81	2	5	6
Non-specified activities	63	2	1	1	67	2	1	1
Total	2 529	100	100	100	3 261	100	100	100
Refers to ages 16 and over								

Employment and employed, 2005 – Men

Industry	Day population				Night population			
	Municipality	County	Sweden	Municipality	County	Sweden		
	Number	%	%	%	Number	%	%	%
Agriculture, forestry and fishing	169	13	4	3	174	10	4	3
Manufacturing and mining	480	38	25	25	640	37	25	24
Energy, water and waste	15	1	2	1	24	1	2	1
Construction	91	7	11	11	143	8	10	11
Trade and communications	178	14	20	22	297	17	20	22
Financial and business services	76	6	11	15	112	6	11	15
Education and research	68	5	9	6	81	5	9	6
Health and social care	83	7	8	5	118	7	8	5
Personal and cultural services	55	4	6	6	78	5	6	6
Public administration, etc.	16	1	4	5	38	2	4	5
Non-specified activities	26	2	1	1	27	2	1	1
Total	1 257	100	100	100	1 732	100	100	100
Refers to ages 16 and over								

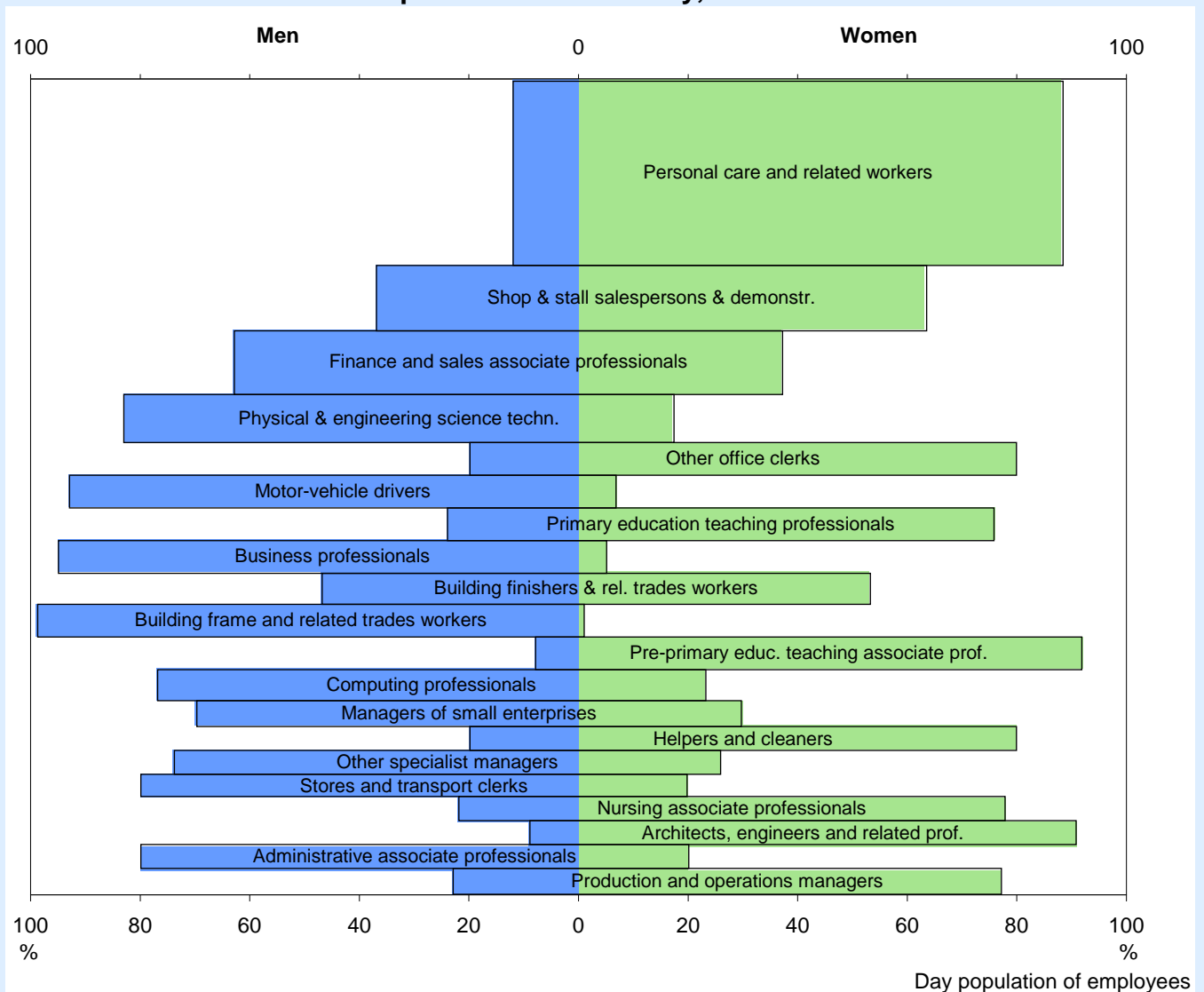
Employment and employed, 2005 – Women

Industry	Day population				Night population			
	Municipality	County	Sweden	Municipality	County	Sweden		
	Number	%	%	%	Number	%	%	%
Agriculture, forestry and fishing	47	4	1	1	44	3	1	1
Manufacturing and mining	147	12	7	9	181	12	7	9
Energy, water and waste	0	0	1	0	9	1	1	0
Construction	6	0	1	1	7	0	1	1
Trade and communications	101	8	11	15	113	7	11	15
Financial and business services	51	4	8	12	78	5	8	12
Education and research	291	23	21	17	308	20	20	17
Health and social care	514	40	36	29	628	41	36	29
Personal and cultural services	65	5	8	8	78	5	8	8
Public administration, etc.	13	1	5	6	43	3	5	6
Non-specified activities	37	3	1	2	40	3	1	2
Total	1 272	100	100	100	1 529	100	100	100
Refers to ages 16 and over								

The 20 most common occupations in the municipality, 2005

Day population of employees	Number		Perc.distr.			Sex distr. (%)	
	Men	Women	M	W	Tot	M	W
Personal care and related workers	42	418	4	35	21	9	91
Other machine operators and assemblers	81	52	8	4	6	61	39
Shop & stall salespersons & demonstr.	38	56	4	5	4	40	60
Metal- & mineral-products machine op.	89	1	8	0	4	99	1
Primary education teaching professionals	20	63	2	5	4	24	76
Motor-vehicle drivers	70	9	7	1	4	89	11
Managers of small enterprises	45	18	4	2	3	71	29
Physical & engineering science techn.	56	6	5	1	3	90	10
Building frame and related trades workers	61	0	6	0	3	100	0
Sec. education teaching professionals	26	27	2	2	2	49	51
Helpers and cleaners	5	46	0	4	2	10	90
Building finishers & rel. trades workers	43	0	4	0	2	100	0
Pre-primary educ. teaching associate prof.	3	37	0	3	2	8	93
Helpers in restaurants	1	35	0	3	2	3	97
Machinery mechanics and fitters	35	0	3	0	2	100	0
Metal mould., welders, sheet-metal work., & rel. wor	32	2	3	0	2	94	6
Animal producers and related workers	11	17	1	1	1	39	61
Finance and sales associate professionals	17	10	2	1	1	63	37
Other office clerks	1	25	0	2	1	4	96
Public service administrative professionals	12	12	1	1	1	50	50
Total 20 occupations	688	834	65	71	68	45	55
All occupations	1 054	1 180	100	100	100	47	53

The 20 most common occupations in the country, 2005



Child care, 2005

Enrollment	Municipality		Sweden
	Number	%	%
Pre-school, 1-5	241	69	76
Leisure time centre, 6-12	176	31	43
Family day care unit, 1-5	52	15	7
6-12	17	3	1
Pre-school class, age 6	63	95	95
Proportion (%) of all within age group			

Elder care, 2006

	Prop. (%) of all within group			
	Municipality		Sweden	
	M	W	M	W
Home-help services	25	27	16	24
Special housing	11	25	12	19
Transport service *	48	73	32	48
Refers to ages 80 and over				* 2005

Total income, 2005

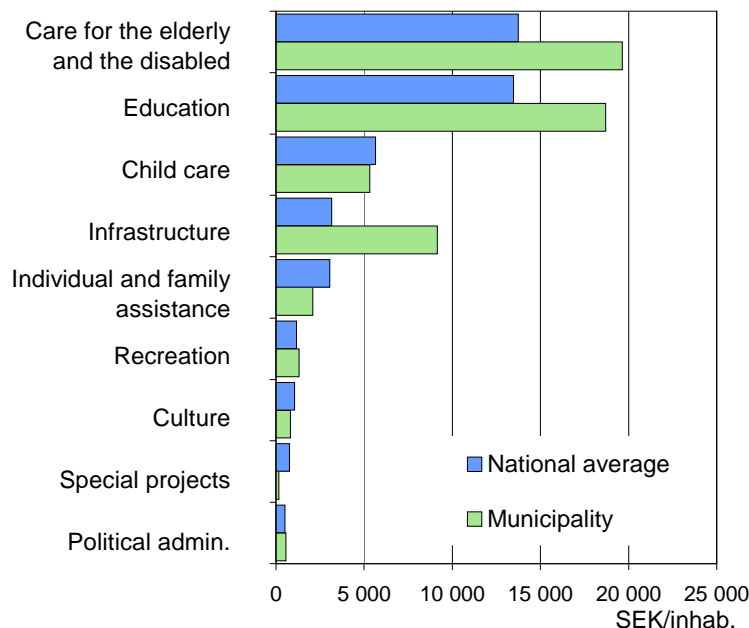
	SEK thousand		
	Men	Women	Total
Average income			
Municipality	226	171	198
County	235	176	205
Sweden	257	184	220
Median income			
Municipality	219	166	192
County	228	171	196
Sweden	235	174	201

Income from employ. and business, age gr. 20-64

Social assistance, 2005

Type of household	Recipient households		Sweden
	Municipality	%	
	Number	%	%
Cohabiting			
without children	7	5	6
with children	14	11	12
Single men			
without children	46	35	39
with children	3	2	3
Single women			
without children	36	27	25
with children	27	20	16
Total	133	100	100

Expenditures SEK, per inhabitant, 2005



Local taxes, 2007

Municipality	
Total local tax rate	32,90
of wich to municipality	22,40
Tax base, SEK/inhab.	132 313
Tax base, index	87

County average	
Total local tax rate	33,10
of wich to municipality	22,60
Tax base, SEK/inhab.	141 529
Tax base, index	93

National average	
Total local tax rate	31,55
of wich to municipality	20,78
Tax base, SEK/inhab.	152 373
Tax base, index	100

Index, Sweden = 100